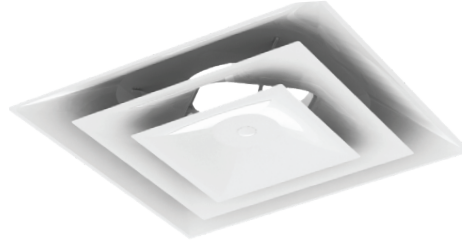




TMS

High Performance Square Diffuser

- 3-cone design
- Steel/aluminum construction
- Border Type 3 – T-bar lay-in
- Finish is #26 white



Module	Neck (in)
12x12	06, 08
24x24	06, 08, 10, 12, 14, 15

*AA-Aluminum

OMNI

Architectural Square Diffuser

- Square plaque face
- Steel/aluminum construction
- Border Type 3 — T-bar lay-in
- Finish is #26 white



Module	Neck (in)
12x12	06, 08
24x24	06, 08, 10, 12, 14, 15

*AA-Aluminum

T3SQ-4

VAV Diffuser

- Thermal variable volume diffuser
- Square plaque face
- Adjustment of minimum airflow is achieved by rotating the grey minimum airflow adjustment ring
- Uses a center induction plug to accurately measure the room temperature
- Finish is #26 white



Module	Neck (in)
24x24	06, 08, 10, 12

TBDI-80

Slot Diffuser

- Adjustable, gasket-tipped blade plenum
- Galvanized steel construction
- Internal insulation
- Center T-bar for 2 slot diffuser
- Optional plaster frame available



Length	Size	
	Slot	Neck
24	1	06
48	1	08
48	2	10



TDC

Square Diffuser

- Square neck
- Removable core
- Flush face
- Steel/aluminum construction
- Finish is #26 white



Module	Neck
Surface Mount	
—	06x06
—	09x09
—	12x12
—	15x15
Lay-In	
12x12	06x06
24x24	06x06, 09x09 12x12, 15x15 18x18, 24x24

*AA-Aluminum

PAS

Perforated Supply Diffuser

- Adjustable pattern control
- Flush face
- Steel/aluminum construction
- Border Type 3 — T-bar lay-in
- Finish is #26 white



Module	Neck (in)
12x12	06
24x24	06, 08, 10, 12 14, 16

* AA-Aluminum

PCS

Perforated Supply Diffuser

- Adjustable pattern control
- Flush face
- Steel construction
- Border Type 3 — T-bar lay-in
- Finish is #26 white



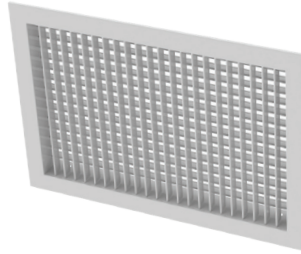
Module	Neck (in)
24x24	06, 08, 10, 12 14, 16



30ORS/FS

Side Wall Supply Grill

- Double deflection
- 3/4" blade spacing
- Individually adjustable blades
- Front blades parallel to the short dimension
- Steel/aluminum construction
- Neck mounted OBD-factory mounted
- Finish is #26 white



Neck

06x04, 08x04, 10x04
12x04 06x06, 08x06
10x06, 12x06 14x06
16x06, 18x06, 20x06
24x06, 08x08, 12x08
4x08, 16x08, 18x08
20x08, 12x10, 14x10
16x10, 18x10, 20x10
18x12, 20x12, 24x12

*RS-Steel; FS-Aluminum

US300FL

Spiral Duct-Mounted Supply Grill

- Double deflection
- 3/4" blade spacing
- Individually adjustable blades
- Foam gasketing standard for tight seal
- Steel/aluminum construction
- Neck mounted OBD-factory mounted
- Finish is #26 white



Neck

12x04, 12x06, 18x06, 24x06

TRM

Rapid Mounting Plaster Frame

- Frame can be mounted in plaster or sheet rock ceiling
- Aluminum construction with steel fasteners
- Finish is #26 white



Module

12x12, 24x12, 24x24