

SPIRAL



SPIRAL PIPE

Single Wall Galvanized

- 28 Gauge galvanized steel
- 10 ft lengths
- Standard (FLAT) spiral seam



Size

06, 08, 10, 12, 14, 16, 18, 20

GORED ELBOWS

Single Wall Galvanized

- 24 Gauge gored steel



Model

Size

45", 90"

14, 16, 18, 20

STAMPED ELBOWS

Single Wall Galvanized

- 26 Gauge stamped steel



Model

Size

45", 90"

06, 08, 10, 12

COUPLINGS

- Pipe to pipe
- Standard (FLAT) spiral seam



Size

06, 08, 10, 12, 14, 16, 18, 20

END CAP



Size

06, 08, 10, 12, 14, 16, 18, 20

SPIRAL (cont.)



REDUCER

- Type R



Size

08x06, 10x06, 10x08, 12x08
12x10, 14x10, 14x12, 16x12
16x14, 18x14, 18x16, 20x16
20x18

BUTTON LOCK

Cody Company, LLC

PIPE

Galvanized Pipe

- 5' Pipe with one end of each piece is crimped for easy fitting of consecutive joints.



Size

04, 06, 08, 10, 12, 14, 16, 18

ELBOW #125

Adjustable Elbow

- 28-30 gauge galvanized steel



Size

04, 06, 08, 10, 12, 14, 16, 18

REDUCER #401

Sheet Metal Reducer

- Crimp on small end
- Collars are hemmed
- 30 gauge galvanized steel



Size

06x04, 07x06, 08x06, 08x07
09x08, 10x06, 10x08, 10x09
12x06, 12x08, 12x10, 14x06
14x08, 14x10, 14x12, 16x10
16x12, 16x14, 18x16, 20x18

WYE #850

Full Flow WYE

- ASTM-A653 CS Type B galvanized steel construction
- Base end is hemmed
- Crimped end on both branches
- 30 gauge galvanized steel



Size

06x06x06, 08x08x06
08x08x08, 10x10x10
12x12x10, 14x12x12

FLUE PIPE



TYPE-B GAS VENT

Pipe & Fittings

- Double wall
- Positive twist-lock connection
- Galvanized steel outer and Aluminum inner material



Model	Size
M3	04, 05, 06, 08, 10, 12
M5	04, 05, 06, 08, 10
M12	04, 05, 06, 08, 10, 12
M18	04, 05, 06, 08, 10, 12
M24	04, 05, 06, 08, 10, 12



Model	Size
M12A	04, 05, 06, 08, 10, 12



Model	Size
M45	10, 12



Model	Size
M90	04, 05, 06, 08

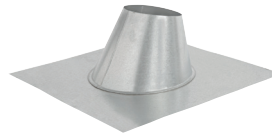
FLUE PIPE (cont.)



Model	Size
MC	08, 10, 12



Model	Size
MCHP	04, 05, 06



Model	Size
MF	04, 05, 06, 08, 10, 12



Model	Size
MFT	06, 08, 10, 12



Model	Size
MSC	04, 05, 06, 08, 10, 12



Model	Size
MDC	04, 05, 06, 08, 10, 12

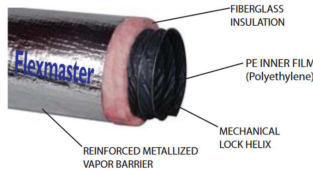
FLEX



FLEXMASTER 1M FLEX

Acoustical Flexible Duct Insulated

- R6 Insulation
- Reinforced metalized vapor barrier
- Mechanically locked to the duct helix without the use of adhesives.
- 25 ft length



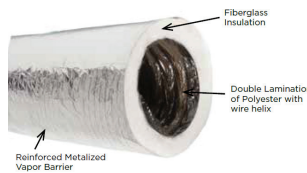
Size

06, 08, 10, 12, 14, 16

FLEXMASTER 9M FLEX

Low Pressure Flexible Duct

- R6 Insulation
- Reinforced aluminum material vapor barrier
- 25 ft length



Size

04, 06, 08, 10, 12, 14, 16, 18



ATCO FLEX

Low-Medium Pressure Flexible Duct

- R6 Insulation
- Metallized polyester outer jacket
- Double lamination polyester around wire helix.
- 25 ft length



Size

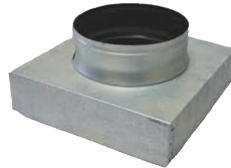
04, 06, 08, 10, 12, 14, 16, 18

SQUARE TO ROUND



ADAPTERS

- Black interior - 26-Gauge G-90 Galvanized steel
- Standard 3" depth size
- Open corners



Module Size	Neck Size
06x06	06
08x08	06, 08
09x09	08
10x10	06, 08, 10
12x12	08, 10, 12
15x15	12, 14
18x18	16
20x20	16, 18
22x10	06, 08, 10
22x22	06, 08, 10, 12, 14, 16, 18
24x24	14, 16, 18

TAPS

CB-SOG & CBD-SOG

Conical Bellmouth SOG (stick on gasket)

- 26-gauge steel
- CBD has B03, build-out (2"), 3/8" square shaft
- U-bolt, nylon bushings, locking quadrant, handle
- 1" formed on flange and stick on gasket to provide air-tight installation



Size

06, 08, 10, 12, 14, 16, 18

FLD-SOG

Straight Collar SOG (stick on gasket)

- 26-Gauge steel
- B03, build-out (2"), 3/8" square shaft
- U-bolt, nylon bushings, locking quadrant, handle
- 1" formed on flange and stick-on gasket to provide air-tight installation



Size

06, 08, 10, 12, 14, 16, 18

TAPS (cont.)



SLD

Connecting Sleeve

- 26-gauge steel
- B03, build-out (2"), 3/8" square shaft
- U-bolt, nylon bushings, locking quadrant, handle



Size

06, 08, 10, 12, 14, 16, 18

STOD-SOG

Side Takeoff 90° (stick on gasket)

- 26-gauge steel
- B03, build-out (2"), 3/8" square shaft
- U-bolt, nylon bushings, locking quadrant, handle
- 1" formed on flange and stick-on gasket to provide air-tight installation



Size

06, 08, 10, 12, 14, 16, 18